



VOGEL
SYSTEMS

Method Statement

CRYSTALLINE WATERPROOFING

Table of Contents

1. Scope
2. Personal responsibilities
3. Materials
4. Tools & equipment
5. Execution procedure
6. Risks
7. Health & safety
8. Storage

SCOPE

The aim of this method statement is to provide and maintain effective quality control procedures and to execute the work in compliance to standard and good practice at all stages during the execution of Crystalline Waterproofing at the site project.



The application of Crystalline waterproofing .

PERSONAL RESPONSIBILITIES

A full and detailed description of the roles and responsibilities of our staff is included within the Project Quality Plan. For the works as covered by this method statement, the following personnel have specific duties.

1. Technical office Engineer specific responsibility include:

Responsible for ensuring that the various submittals are timely undertaken (Materials, method statements, workshop drawings, technical issues)

- Responsible for quotations as required (materials, subcontractors)

2. Site Engineer specific responsibility include:

- Ensuring that the project is managed in a safe manner and meets the requirements of the project documentation.
- Ensuring that contractors and suppliers achieve the on-site required standards.
- Shall refer to the QA/QC Department and the HSE Department for advice and guidance when required.
- Shall ensure that operatives comply with the relevant method statements, Toolbox Talks and general site briefings.

MATERIALS

1. VogaBond Latex

2. Voga Cryst-Seal



VOGA CRYST-SEAL



VOGABOND LATEX

TOOLS & EQUIPMENT

- Paint Brushes/ Rollers



- Grinder



- Paint Sprayers



AS REQUIRED.

- Hand Tools



Trowel , Spatula or putty knife ,scraper ,hammer ..etc).

- Air compressor



AS REQUIRED.

EXECUTION PROCEDURE

Surface preparation for waterproofing

1.Surface / substrate preparation is the most important for cementitious and reactive waterproofing system.

2.The concrete surface shall be clean and free from contamination such as dust, oil, grease, organic growthetc.

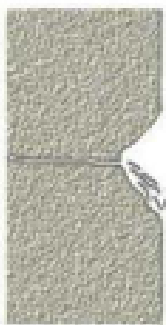
3.All loosely adhering particles such as mortar and cement laitance shall be removed.

4.The surface would be cleaned by brushing and finally soft brushing or compressed air.

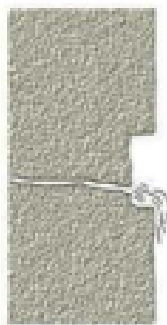
5.Cracks (if any) shall be repaired as recommended by the manufacturer.

6. The corner fillet will be between any horizontal and vertical element by using mortar with adding VogaBond Latex Surface preparation is the most important for cementitious and reactive waterproofing system.

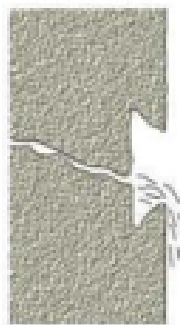
7. Cracks or fissures must be opened to a minimum depth of 4 cm and a width from 3 to 4 cm. In order to provide a good mechanical key, make a square-shaped groove; preferably dovetail to the surface to which the material is applied. Avoid a "V" shape, as shown in drawings application, dampen the surface before applying VogaBond Latex .



WRONG



RIGHT



OPTIMUM



VOGABOND LATEX

EXECUTION PROCEDURE

Sealing leaks in cracks or joints

1.Prepare the surface removing the loose or unsound concrete from the crack or joint and cutting to a depth of 5 cm. VogaBond Latex should be applied in small amounts that can be applied by hand.

2.Once VogaBond Latex is mixed, form the mixture into the shape of a plug and hold it in your hand until it becomes warm and then, VogaBond Latex firmly into the crack or joint but do not twist or overwork. Maintain pressure with the hand until it sets and finally remove any excess material with a trowel.



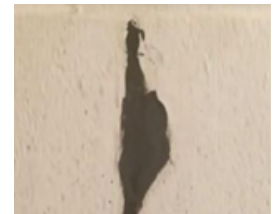
VOGABOND LATEX



A



B



C

Sealing joints between concrete (slab & wall) or (wall & wall)

This is a common situation . Along the concave corners at least a 2 x 3 cm groove must be opened and filled with VogaBond Latex in the shape of a waterproofing cove.



VOGABOND LATEX



Sealing all coves

EXECUTION PROCEDURE

Waterproofing application

1. Substrate surface be thoroughly wetted/dampen.
2. The mixed material Voga Cryst-Seal shall be used by brush, trowel or roller as per site condition and finishing requirements.
3. For spray application the substrate shall be prepared in the same manner as of brush application.
4. Voga Cryst-Seal shall be applied in two coats. Each coat should be a minimum of 1 mm thickness.
5. Allow a minimum of 5 hours cure at 20 ° and 3 hours at 35 ° between the first and second coats.
6. The application of waterproofing shall be done under competent personnel's supervision and as per manufacturer's recommendations.

RISKS

- Avoid any inhalation of vapours, avoid skin contact
Wear protective gloves and protective goggles In case of skin contact, rinse immediately with soap and water In case of eye contact, bathe eyes with water at once, then consult a doctor Observe the guidelines concerning the handling of epoxy resins and amines issued by the Employer's Liability Insurance Associations.
- As with all chemical products, care should be taken, during use and storage, to avoid contact with eyes, mouth, skin and foodstuffs (which can also be tainted with vapour until product has fully cured or dried). Treat splashes to eyes and skin immediately. If accidentally ingested, seek medical attention. Re-seal containers after use.

HEALTH AND SAFETY

- Make sure that the workers involved in the installation of the Cementitious Waterproofing are experienced and well trained.
- Every stage of the installation must be supervised properly. Check all the routes of material transportation and remove any form of obstacle that could cause accidents. There should be frequent cleaning during working hours.
- Every equipment used must be maintained in accordance with legal requirements.
- Electrical connections should be handled by qualified and approved electricians.
- The workplace must be barricaded and well protected to prevent unauthorized personnel. A work permit must be issued to every person by the main contractor before work starts on the site.
- Appropriate loading and offloading equipment should be provided by the contractor. All the equipment should be certified and handled by a qualified operator.
- Keep a material safety data sheet to ensure that materials are handled well especially chemicals. Major spill kit available and personal protective equipment must be made available to every personnel must be worn at all times.



STORAGE AND HANDLING OF WATERPROOFING MATERIALS

- Materials shall be stored in a cool and dry place and avoid putting in direct sun light and as directed by the materials manufacturer.
- Materials shall be placed in a way to avoid the direct contact with ground soil.
- Materials shall not be exposed to the fire or naked flames in any circumstances.
- Failure to comply with the recommended storage conditions may result in premature deterioration of the product or packaging.

CONTACT INFORMATION

 +201208160230

 info@vogelsystems-eg.com

 vogelsystems-eg.com