



**VOGEL**  
S Y S T E M S

**Method Statement**

# **EPOXY MORTAR WORKS**

**Indoor and Outdoor ramps**

# **Table of Contents**

---

- 1. Scope
- 2. Purpose
- 3. Specifications clauses
- 4. Materials
- 5. Tools & equipment
- 6. Construction procedure
- 7. Risks
- 8. Health & safety
- 9. Storage
- 10. Quality control procedures
  - 10.1 General
  - 10.2 Procedure

## SCOPE

The aim of this method statement is to provide and maintain effective quality control procedures and to execute the work in compliance to standard and good practice at all stages during the execution of epoxy mortar works on the project site .



The application of epoxy mortar works on the project site .

## PURPOSE

The purpose of this method statement is intended to inform the consulting engineer how the work will be delivered on site associated with risks and precautions to be taken during working on site.

The purpose of this statement:

- To outline how the work will be achieved on site.
- To meet the drawings and specifications requirements.
- To predict possible problems.

## SPECIFICATIONS CLAUSES

- Project specification.
- Approved shop drawing.
- Contract documents.
- Material Submittal.

## MATERIALS

- Primer (VogaFloor 152)
- Epoxy mortar (VogaFloor 152)
- Epoxy paint (VogaFloor 152)
- Polyurethane coat (VOGAPROTECT PU)



VOGAFLOOR 152



VOGAPROTECT PU

## TOOLS & EQUIPMENT

- Paint Brushes/ Rollers



- Grinder



- Paint Sprayers



AS REQUIRED.

- Hand Tools



Trowel , Spatula or putty knife ,scraper ,hammer ..etc).

- Air compressor

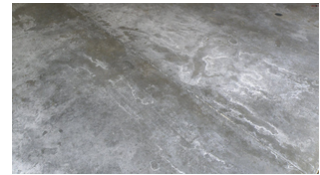


AS REQUIRED.

# CONSTRUCTION PROCEDURES

## Floor epoxy mortar for Indoor ramps

1. Make sure that the reinforced concrete slab on the ground surface is dry, and the moisture content should be less than 5%
2. The surface must be roughened using a grinding machine or vacuum.
3. The prepared substrate should then be primed with (VogaFloor 152) solvent free primer from (VOGEL) .
4. Apply 5 mm epoxy mortar layer of (VogaFloor 152) mortar from (VOGEL) "Heavy duty epoxy screed for floors subjected to extreme abrasion operation conditions .
5. After mixing of 2 components of ( VogaFloor 152) apply the 1st coat of (VogaFloor 152) solvent free epoxy coating from (VOGEL) .
6. Spread Non-slip aggregate with (VOGA QUARTZ) from (VOGEL)
7. Apply a 2nd epoxy coat (VogaFloor 152) solvent free epoxy coating from (VOGEL)



Dry surface



Grinding or vacuuming



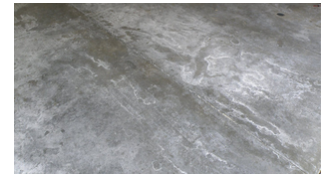
**VOGAFLOOR 152**



# CONSTRUCTION PROCEDURES

## Floor epoxy mortar for outdoor ramps

1. Make sure that the reinforced concrete slab on the ground surface is dry, and the moisture content should be less than 5%
2. The surface must be roughened using a grinding machine or vacuum.
3. The prepared substrate should then be primed with (VogaFloor 152) solvent free primer from (VOGEL) .
4. Apply 5 mm epoxy mortar layer of (VogaFloor 152) mortar from (VOGEL) "Heavy duty epoxy screed for floors subjected to extreme abrasion operation conditions .
5. After mixing of 2 components of ( VogaFloor 152) apply the 1st coat of (VogaFloor 152) solvent free epoxy coating from (VOGEL) .
6. Spread Non-slip aggregate with (VOGA QUARTZ) from (VOGEL)
7. Apply a 2nd epoxy coat (VogaFloor 152) solvent free epoxy coating from (VOGEL)
8. Apply a polyurethane coat (VOGAPROTECT PU) from (VOGEL) " can resist weathering and abrasion conditions" .



Dry surface



Grinding or vacuuming



**VOGAFLOOR 152**



**VOGAPROTECT PU**

## RISKS

- Avoid any inhalation of vapours, avoid skin contact! Wear protective gloves and protective goggles! In case of skin contact, rinse immediately with soap and water! In case of eye contact, bathe eyes with water at once, then consult a doctor! Observe the guidelines concerning the handling of epoxy resins and amines issued by the Employer's Liability Insurance Associations.
- As with all chemical products, care should be taken, during use and storage, to avoid contact with eyes, mouth, skin and foodstuffs (which can also be tainted with vapour until product has fully cured or dried). Treat splashes to eyes and skin immediately. If accidentally ingested, seek medical attention. Re-seal containers after use..



## HEALTH AND SAFETY

- Make sure that the workers involved in the installation of the epoxy resin floor coating are experienced and well trained.
- Every stage of the installation must be supervised properly. Check all the routes of material transportation and remove any form of obstacle that could cause accidents. There should be frequent cleaning during working hours.
- Every equipment used must be maintained in accordance with legal requirements.
- Electrical connections should be handled by qualified and approved electricians.
- The workplace must be barricaded and well protected to prevent unauthorized personnel. A work permit must be issued to every person by the main contractor before work starts on the site.
- Appropriate loading and offloading equipment should be provided by the contractor. All the equipment should be certified and handled by a qualified operator.
- Keep a material safety data sheet to ensure that materials are handled well especially chemicals. Major spill kit available and personal protective equipment must be made available to every personnel must be worn at all times.

## STORAGE

- Store in dry conditions in the original packs. If stored at high temperatures and/or high humidity conditions the shelf life may be reduced. Materials should be protected from frost.
- Make sure all the pads have the same temperature during the entire installation period. Lay down the pads 24 hours before the installation to allow them to get their original dimensions. Install all the pads in a single laying session in order to guarantee installation under similar conditions.

# QUALITY CONTROL PROCEDURES

---

## General

- Each activity should be performed by assigned employee within the organization chart .
- Q.C engineer must assure the procedure of insulation.
- Work procedure should follow this method statement and preparatory technical meetings.
- Q.C engineer must follow the area of storage membrane and assure that this area didn't have any conflict with area of storage.

## Procedures

- The site engineer to inform the area ready for inspection and submitted to Q.C dep.
- The quality engineer checked the activity and assure that the site engineer follow the specs. And the method statement and assure that the work done by the quality system.
- The quality engineer sends I.R to the consultant to inspect the activities according to I.T.P for action.
- In case of approval for the activity the quality engineer gives his guidance to site engineer to start the next activity to achieve the Q/A.
- In case of rejection copy of commented I.R forward to construction DEP. And the Q.C engineer prevents the site engineer to start the next activity even finish all comments existed on I.R.

---

## CONTACT INFORMATION



+201208160230



info@vogelsystems-eg.com



vogelsystems-eg.com

