



**VOGEL**  
S Y S T E M S

**Method Statement**

# **STABILIZED SAND**

**OUTDOOR POLYURETHANE PAINTING**

# **Table of Contents**

---

1. Scope
2. Purpose
3. Specifications clauses
4. Materials
5. Tools & equipment
6. Construction procedure
7. Risks
8. Health & safety
9. Storage

## SCOPE

The aim of this method statement is to provide and maintain effective quality control procedures and to execute the work in compliance to standard and good practice at all stages during the execution of epoxy painting works on the project site.



The application of epoxy flooring, a durable and customizable flooring solution.

## PURPOSE

The purpose of this method statement is intended to inform the consulting engineer how the work will be delivered on site associated with risks and precautions to be taken during working on site.

The purpose of this statement:

- To outline how the work will be achieved on site.
- To meet the drawings and specifications requirements.
- To predict possible problems.

## SPECIFICATIONS CLAUSES

- Project specification.
- Approved shop drawing.
- Contract documents.

## MATERIALS

- paint ( VogaFloor 120)



**VOGAFLOOR 120**

## TOOLS & EQUIPMENT

- Paint Brushes/ Rollers



- Grinder



- Paint Sprayers



AS REQUIRED.

- Hand Tools



Trowel , Spatula or putty knife ,scraper ,hammer ..etc).

- Air compressor



AS REQUIRED.

# CONSTRUCTION PROCEDURES

## Floor epoxy painting (antislip)

1. Make sure that the reinforced concrete slab on the ground surface is dry, and the moisture content should be less than 5%

2. The surface must be roughened using a grinding machine or vacuum.

3. The prepared substrate should then be primed with (**VogaFloor120**) Solvent free primer from (**Vogel**) to achieve a chemical bonding between substrate and epoxy layer. Add component B in the right mixing ratio to Component A and mix by means of a slow speed electric stirrer (approx. 300 - 400 rpm). Mix for at least 3 minutes until a homogeneous mixture is obtained. Fill into a clean container..

4. Apply a 1st putty coat by adding any kind of filling material to voga floor 120 to fill any cavities in concrete.

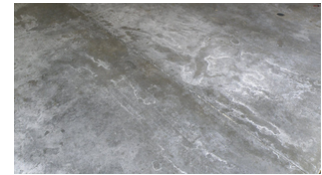
5. After mixing of 2 components of voga floor 120 apply the 1st coat of voga floor solvent free epoxy coating from (Vogel) using a good quality roller (colour upon request) with consumption rate 300/m<sup>2</sup>, transparent color.

6. Apply nonslip aggregate on the first epoxy coat before its dry in white yellow.

7. Brush off extra aggregate.

8. Apply a 2<sup>nd</sup> epoxy coat of voga floor 120 solvent free epoxy coating from (Vogel) using a good quality roller (colour upon request) with consumption rate 300/m<sup>2</sup>.

9. Apply UV-top coat by using (Vogaprotect pu) which is a polyurethane base coat to protect surface from weather conditions and UV rays.



Dry surface



Grinding or vacuuming



**VOGAFLOOR 120**



Non slip aggregate



Brushing extra aggregate



**VOGAPROTECT PU**



## RISKS

- Avoid any inhalation of vapours, avoid skin contact! Wear protective gloves and protective goggles! In case of skin contact, rinse immediately with soap and water! In case of eye contact, bathe eyes with water at once, then consult a doctor! Observe the guidelines concerning the handling of epoxy resins and amines issued by the Employer's Liability Insurance Associations.
- As with all chemical products, care should be taken, during use and storage, to avoid contact with eyes, mouth, skin and foodstuffs (which can also be tainted with vapour until product has fully cured or dried). Treat splashes to eyes and skin immediately. If accidentally ingested, seek medical attention. Re-seal containers after use..



## HEALTH AND SAFETY

- Make sure that the workers involved in the installation of the epoxy resin floor coating are experienced and well trained.
- Every stage of the installation must be supervised properly. Check all the routes of material transportation and remove any form of obstacle that could cause accidents. There should be frequent cleaning during working hours.
- Every equipment used must be maintained in accordance with legal requirements.
- Electrical connections should be handled by qualified and approved electricians.
- The workplace must be barricaded and well protected to prevent unauthorized personnel. A work permit must be issued to every person by the main contractor before work starts on the site.
- Appropriate loading and offloading equipment should be provided by the contractor. All the equipment should be certified and handled by a qualified operator.
- Keep a material safety data sheet to ensure that materials are handled well especially chemicals. Major spill kit available and personal protective equipment must be made available to every personnel must be worn at all times.





## STORAGE

---

- Store in dry conditions in the original packs. If stored at high temperatures and/or high humidity conditions the shelf life may be reduced. Materials should be protected from frost.
- Make sure all the pads have the same temperature during the entire installation period. Lay down the pads 24 hours before the installation to allow them to get their original dimensions. Install all the pads in a single laying session in order to guarantee installation under similar conditions

## CONTACT INFORMATION

---

 +201208160230

 [info@vogelsystems-eg.com](mailto:info@vogelsystems-eg.com)

 [vogelsystems-eg.com](http://vogelsystems-eg.com)